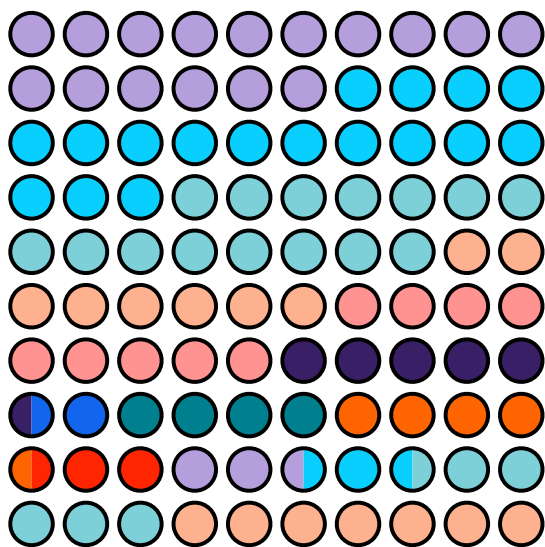


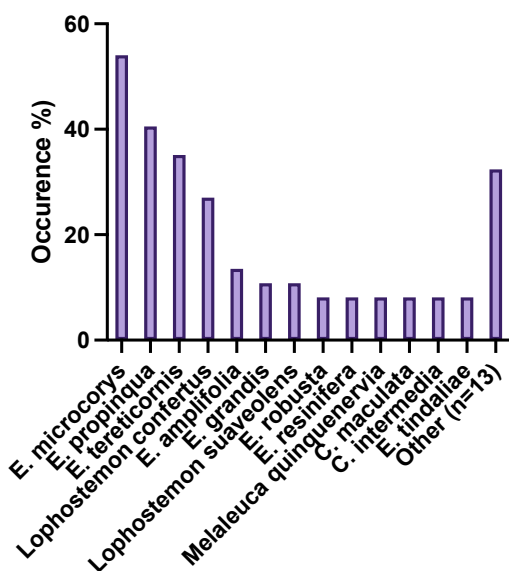
Box 3: Summary of koala diet composition across scats from Gold Coast LGA

learn more at www.whatdokoalaseat.org

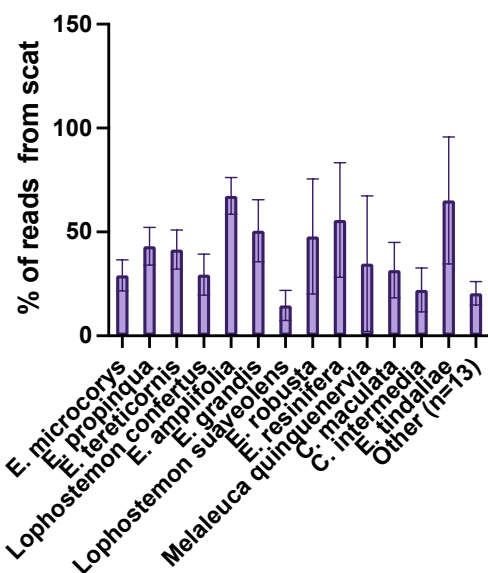
Proportion of total reads by species



Frequency of detection in scats



Mean contribution to scat



Number of scat samples returning data: 37

Number of species detected per scat:

mean: 2.76

median: 2

max: 7

mean effective number of species (1/D): 1.80

number of species detected: 24

Other: *E. exserta*; *E. camaldulensis*; *E. crebra* and/or *elegans* and/or *fibrosa*; *C. variegata*; *E. carnea*; *E. major*; *C. tessellaris*; *E. dura* and/or *siderophloia*; *E. granitica* and/or *whittei*; *E. bancroftii*; *E. bancroftii/seeana*; *E. siderophloia*; *E. pilularis*;

