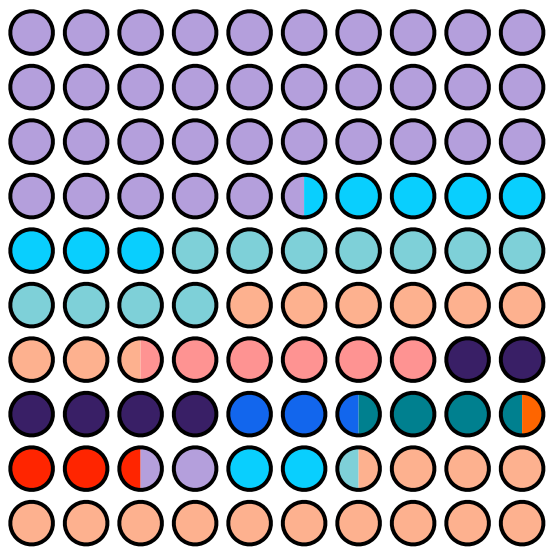


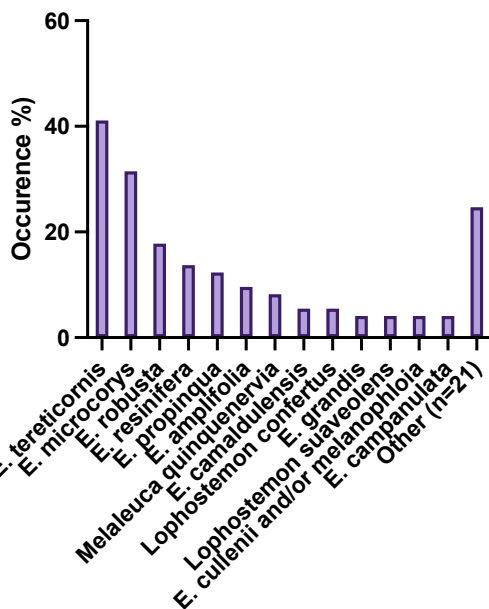
## Box 9: Summary of koala diet composition across scats from Redland LGA (including North Stradbroke Island)

learn more at [www.whatdokoalaseat.org](http://www.whatdokoalaseat.org)

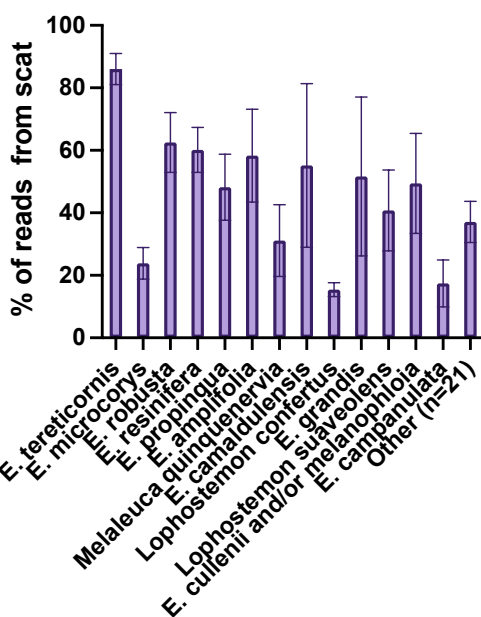
Proportion of total reads by species



Frequency of detection in scats



Mean contribution to scat



Number of scat samples returning data: 73

Number of species detected per scat:

mean: 1.97

median: 1

max: 7

mean effective number of species (1/D): 1.53

number of species detected: 30

**Other:** *C. maculata*; *C. variegata*; *E. seeana*; *E. racemosa*; *E. signata*; *E. exserta*; *E. acmenoides*; *E. dura* and/or *fibrosa* and/or *taurina*; *E. tereticornis-platyphylla* hybrid; *E. carnea*; *E. dunnii*; *C. citriodora*; *E. drepanophylla*; *E. melanophloia*; *E. chloroclada*; *E. macta*; *E. bancroftii/seeana*; *E. macta/resinifera*; *E. blakelyi*; *E. portuensis*; *C. trachyphloia*;

