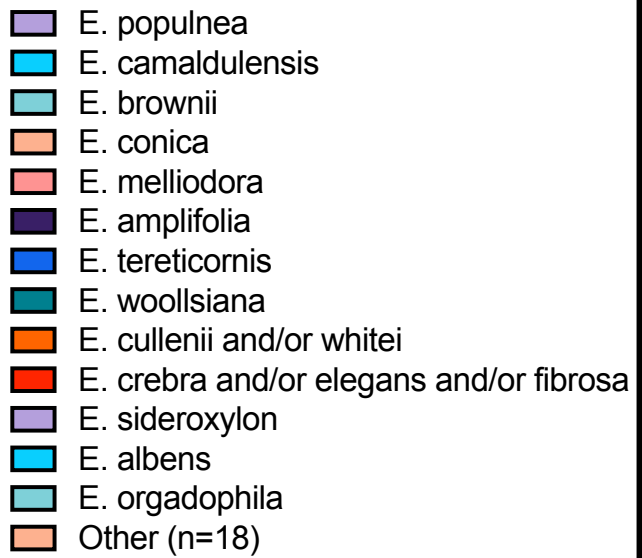
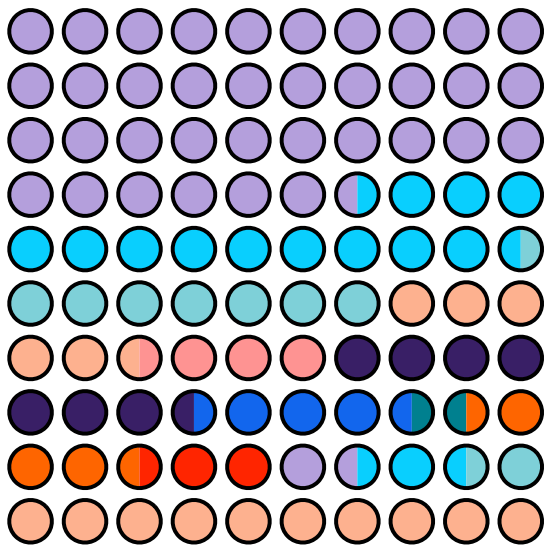


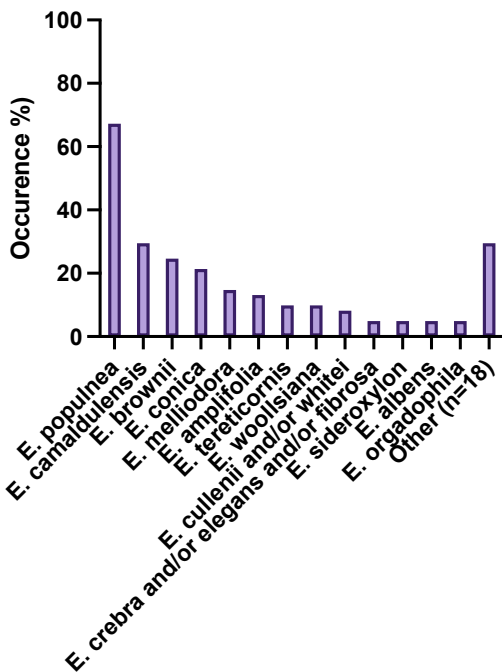
## Box 12: Summary of koala diet composition across scats from Toowoomba LGA

learn more at [www.whatdokoalaseat.org](http://www.whatdokoalaseat.org)

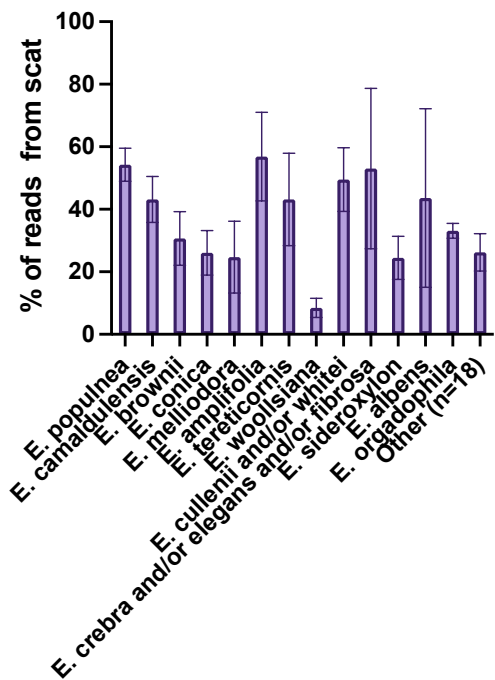
### Proportion of total reads by species



### Frequency of detection in scats



### Mean contribution to scat



Number of scat samples returning data: 61

Number of species detected per scat:

mean: 2.56

median: 2

max: 4

mean effective number of species (1/D): 1.80

number of species detected: 27

**Other:** *E. dunnii*; *E. coolabah*; *E. platyphylla*; *E. microcarpa*; *E. cambageana*; *E. longirostrata*; *C. tessellaris*; *E. cullenii and/or melanophloia*; *E. melanophloia*; *E. chloroclada*; *E. moluccana*; *E. blakelyi*; *E. dura and/or fibrosa and/or rhombica*; *E. granitica*; *E. crebra and/or elegans*; *E. rhombica*; *E. largiflorens*; *E. ochrophloia*;

